



MONTHLY MEMBERSHIP PROGRESS REPORT

District 105 C

Results as of: 01/31/2018

GMT: JOOST PAIJMANS

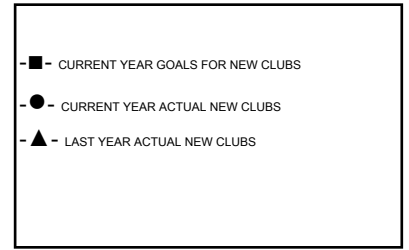
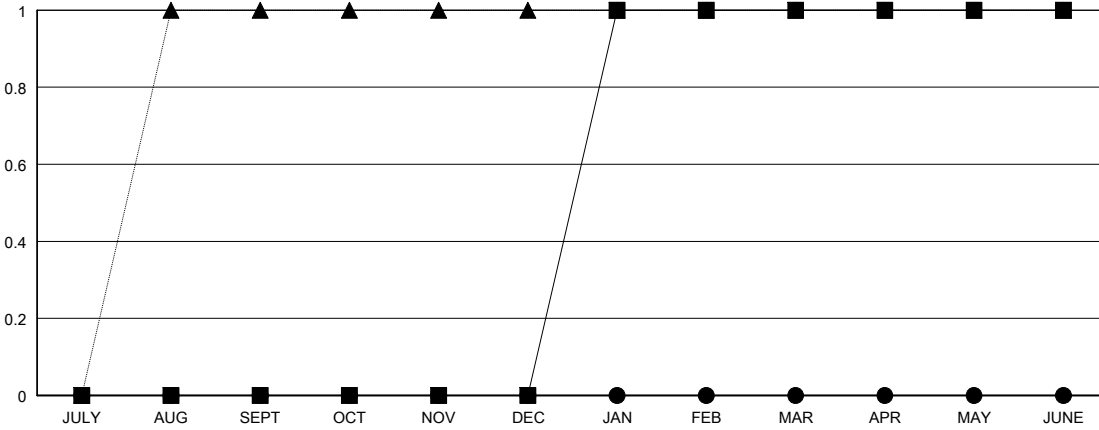
LOCATION ENGLAND

GMT CA

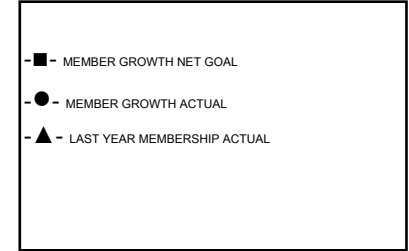
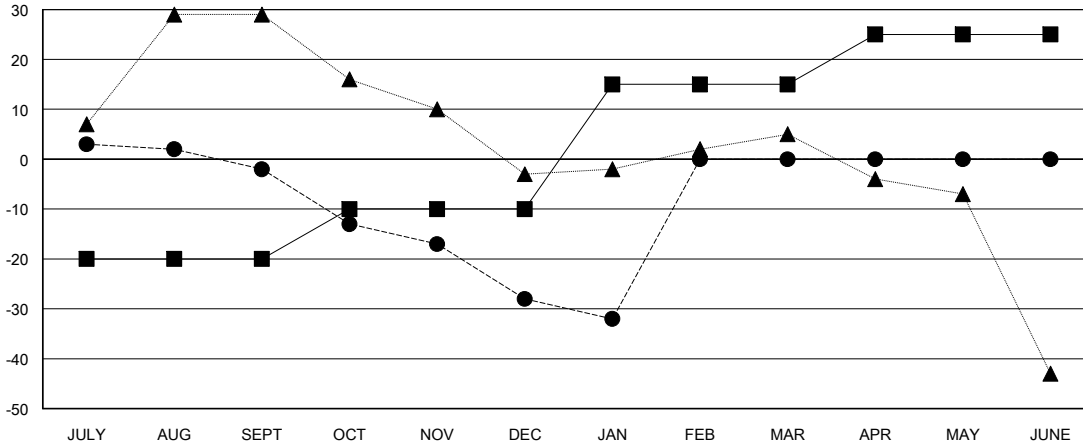
Clubs			
RESULTS FOR 2017-2018			
QUARTER	NEW CLUB GOAL	NEW CLUBS	DROPPED CLUBS
JULY/AUG/SEPT	0	0	0
OCT/NOV/DEC	0	0	0
JAN/FEB/MAR	1	0	0
APR/MAY/JUNE	0	0	0

Members			
RESULTS FOR 2017-2018			
QUARTER	MEMBER GROWTH NET GOAL	MEMBER GROWTH ACTUAL	DROPPED MEMBERS ACTUAL (including transfers)
JULY/AUG/SEPT	-20	12	14
OCT/NOV/DEC	10	8	31
JAN/FEB/MAR	25	9	13
APR/MAY/JUNE	10	0	0

GOALS AND ACTUAL NEW CLUBS CUMULATIVE



GOALS AND ACTUAL MEMBERS CUMULATIVE



DROPPED CLUBS: 0

21 CLUBS OF 51 ADDED 1 OR MORE NEW MEMBERS

GENDER DISTRIBUTION	
MALE	576 (68.09%)
FEMALE	270 (31.91%)
Women Percentage Fiscal Year Goal: 30%	

DROPPED MEMBERS	
DECEASED	10
CLUB CANCELLED	0
OTHER	48
TOTAL	58

[CLICK HERE FOR CUMULATIVE MEMBERSHIP DATA](#)

TOTAL FAMILY UNIT MEMBERS	111
FAMILY MEMBERS PAYING HALF DUES	57